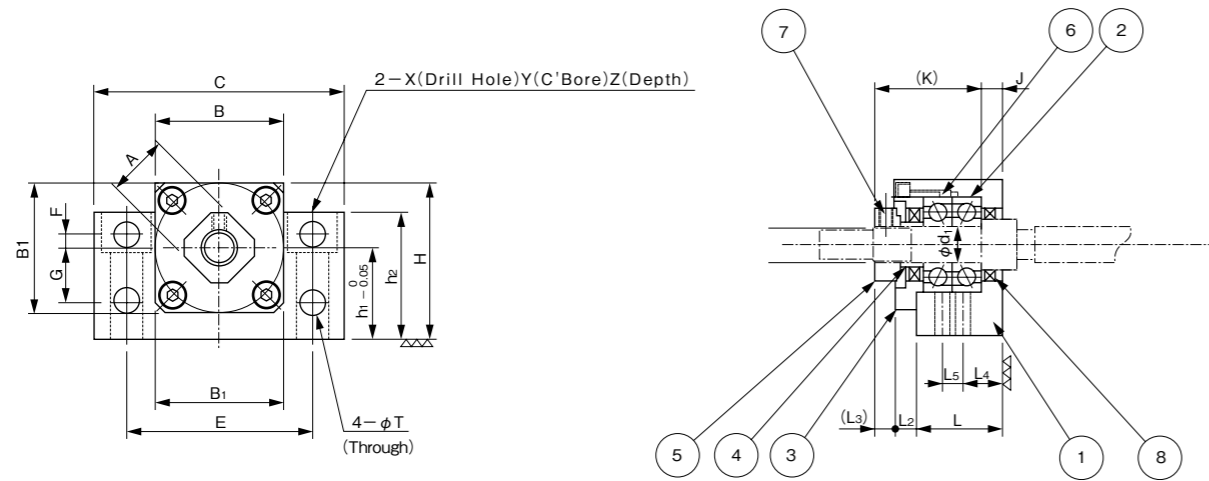


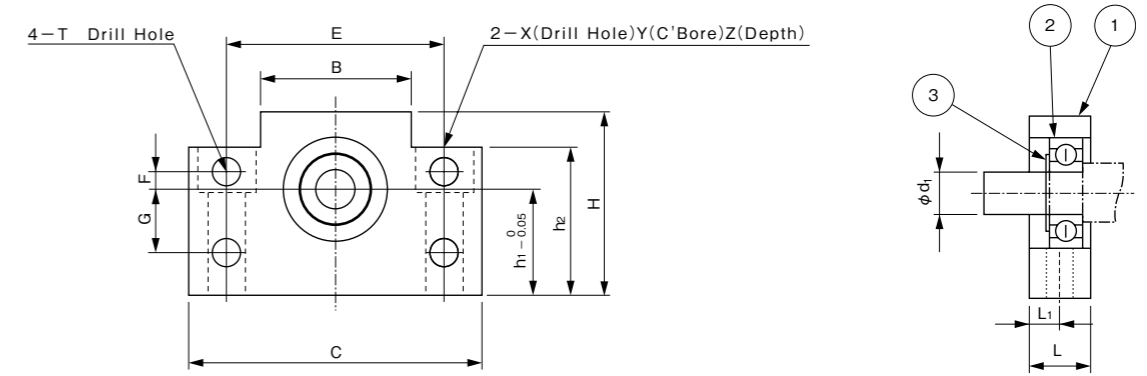
■ Square Type Support Unit (Fix Side) SPUT-F Series



Unit : mm

Type	d ₁	L	L ₂	L ₃	L ₄	L ₅	C	H	h ₁	h ₂	A	B	B ₁	E	F	G	J	K	T	X	Y	Z	Bearing.No.
SPUT-8F	8	20	3	4	10	-	52	32	17	26	13	25	25	38	4	10	4	23	5.5	6.6	11	12	708ADFP5
SPUT-10F	10	24	6	5.5	12	-	70	43	25	35	17	36	36	52	4	15	6	29.5	6.6	9	14	11	7000ADFP5
SPUT-12F	12	24	6	5.5	12	-	70	43	25	35	19	36	36	52	4	15	6	29.5	6.6	9	14	11	7001ADFP5
SPUT-15F	15	25	6	12	12.5	-	80	50	30	40	21	41	40	60	4	15	5	38	6.6	11	17.5	15	7002ADFP5
SPUT-20F	20	42	10	10	10	22	95	58	30	45	30	56	56	75	-	-	10	52	-	11	17	15	7204ADFP5

■ Square Type Support Unit (Support Side) SPUT-S Series



Unit : mm

Type	d ₁	L	L ₁	C	H	h ₁	h ₂	B	E	F	G	T	X	Y	Z	Bearing.No.	Snap Ring
SPUT-8S	6	15	7.5	52	32	17	26	25	38	4	10	5.5	6.6	11	12	606ZZ	C6
SPUT-10S	8	20	10	70	43	25	35	36	52	4	15	6.6	9	14	11	608ZZ	C8
SPUT-12S	10	20	10	70	43	25	35	36	52	4	15	6.6	9	14	11	6000ZZ	C10
SPUT-15S	15	20	10	80	50	30	40	41	60	4	15	6.6	9	14	11	6002ZZ	C15
SPUT-20S	20	26	13	95	58	30	45	56	75	-	-	-	11	17	15	6204ZZ	C20

Part No.	Part Name	Quantity	Remarks
1	Housing	1	
2	Bearing	1set	
3	Plate	1	
4	Spacer	1	
5	Lock Nut	1	
6	Screw Thread	4	SPUT-8F Machine Screw SPUT10~20F Hexagon Socket Head Cap Screw
7	Set Screw	1	Including a Brass Piece
8	Oil Seal	2	Not available for SPUT-8F

1. Do not disassemble Support Units adjusted on proper preload.
2. Bearings in Support Units are greased properly.
3. After having fastened shaft end with a lock nut, put a brass piece into a drilled hole before tightening with a set screw slightly.

Part No.	Part Name	Quantity
1	Housing	1
2	Bearing	1
3	Snap Ring	1