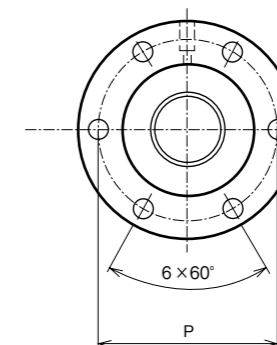
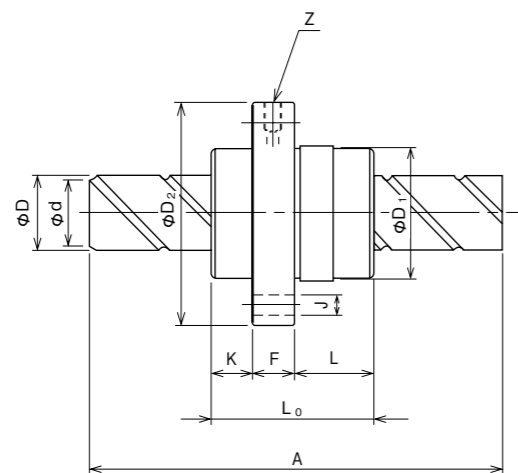


TSK Standard Rolled Ball Screws RBE (Super-High Speed Lead Type) Series



Identification Number	Shaft		Lead	Circuit Direction	Nut					
	Outer Dia. D	Root Dia. d1			Ball Circle Diameter d	Number of Circuits m	O.D. D1	Length		
								K	L	L0
RBE 1520	15	12.5	20 (10)	Right	3.175	3	34	10	27	47
RBE 1632	16	13.7	32 (8)	Right	2.778	2	34	9	18	37
RBE 2040	20	17.5	40 (10)	Right	3.175	2	38	10	25	45
RBE 2550	25	21.9	50 (12.5)	Right	3.969	2	46	12	31	55
RBE 3620	36	31.2	20 (10)	Right	6.35	5	70	20	38	76
RBE 3624	36	30.6	24 (12)	Right	7.144	5	75	22	50	90
RBE 5050	50	44.0	50 (25)	Right	7.938	3	90	24.5	71.5	118

Unit : mm

Flange					Axial Play (MAX)	Basic Load Rating (N)		Shaft Length (MAX) A	Nut Type
Dia D2	Thickness F	P.C.D P	Hole Dia J	Oil Hole Z		Dynamic Ca	Static Co		
55	10	45	5.5	M6×0.75	0.10	5200	8600	1500	RBE 1520
55	10	45	5.5	M6×0.75	0.10	2500	4500	1500	RBE 1632
58	10	48	5.5	M6×0.75	0.10	3300	6500	2000	RBE 2040
70	12	58	6.6	M6×0.75	0.12	5000	10200	2500	RBE 2550
110	18	90	11	—	0.19	32100	65900	3500	RBE 3620
115	18	94	11	—	0.22	38600	78300	3500	RBE 3624
135	22	112	14	PT1/8	0.24	32400	72600	5500	RBE 5050

Note : The basic dynamic load rating (C,C0) values are based on a rated life standard of 250km or 10⁶ revolutions.

Code Name

