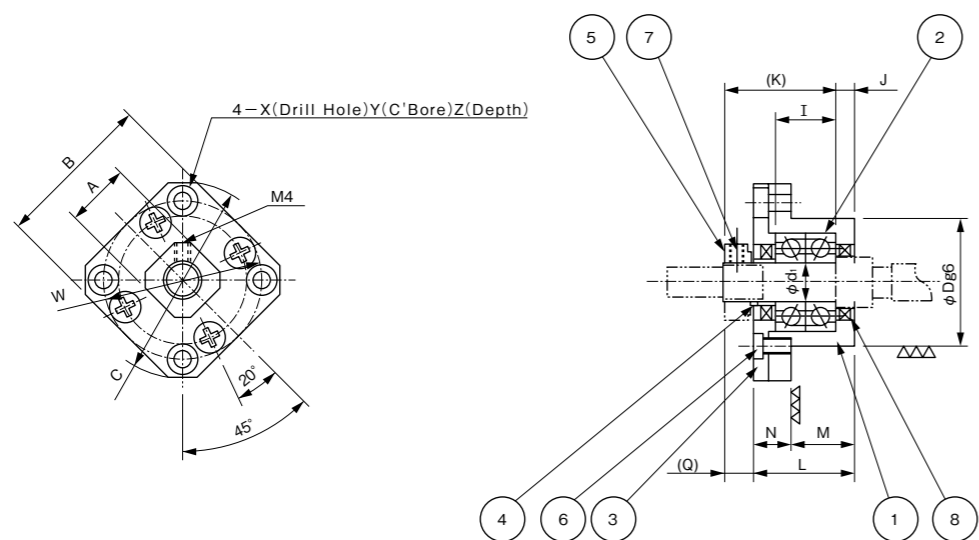


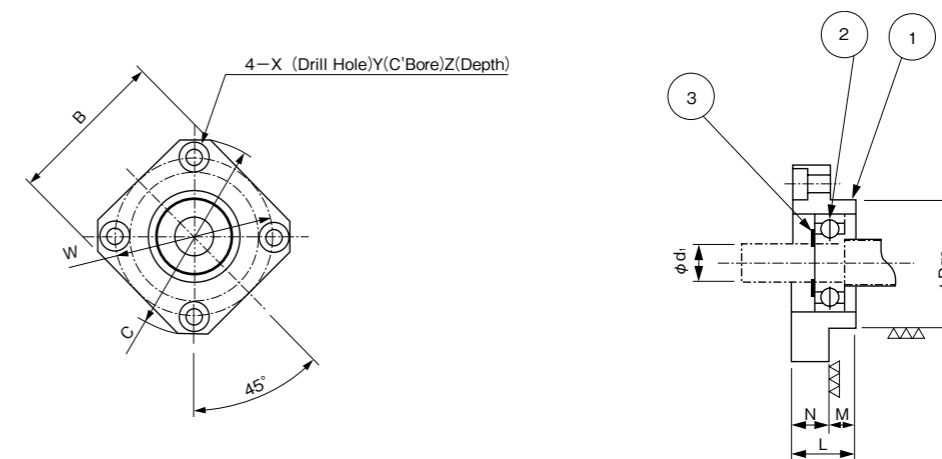
■ Flange Type Support Unit (Fix Side) RPUT-F Series



Unit : mm

Type	d <sub>i</sub>	L	M	N	D	I	A	B	C	W	X	Y	Z	Bearing.No.
RPUT-8F	8	23	14	9	28	14	13	35	43	35	3.4	6.5	3	708ADFP5
RPUT-10F	10	27	17	10	34	16	17	42	52	42	4.5	8	4	7000ADFP5
RPUT-12F	12	27	17	10	36	16	19	44	54	44	4.5	8	4	7001ADFP5
RPUT-15F	15	32	17	15	40	18	21	52	63	50	5.5	9.5	6	7002ADFP5
RPUT-20F	20	52	30	22	57	28	30	68	85	70	6.6	11	10	7204ADFP5

■ Flange Type Support Unit (Support Side) RPUT-S Series



Unit : mm

Type	d <sub>i</sub>	L	M	N	D	B	C	W	X	Y	Z	Bearing.No.	Snap Ring
RPUT-8S	6	10	4	6	22	28	36	28	3.4	6.5	3	606ZZ	C6
RPUT-10S	8	12	5	7	28	35	43	35	3.4	6.5	3	608ZZ	C8
RPUT-12S	10	15	8	7	34	42	52	42	4.5	8	4	6000ZZ	C10
RPUT-15S	15	17	8	9	40	52	63	50	5.5	9.5	5.5	6002ZZ	C15
RPUT-20S	20	20	9	11	57	68	85	70	6.6	11	6.5	6204ZZ	C20

Part No.	Part Name	Quantity	Remarks
1	Housing	1	
2	Bearing	1 set	
3	Plate	1	
4	Spacer	1	
5	Lock Nut	1	
6	Screw Thread	4	RPUT 8~12F Machine Screw RPUT 15~20F Hexagon Socket Head Cap Screw
7	Set Screw	1	Including a Brass Piece
8	Oil Seal	2	Not available for RPUT-8F

1. Do not disassemble Support Units adjusted on proper preload.
2. Bearings in Support Units are greased properly.
3. After having fastened shaft end with a lock nut, put a brass piece into a drilled hole before tightening with a set screw slightly.

Part No.	Part Name	Quantity
1	Housing	1
2	Bearing	1
3	Snap Ring	1