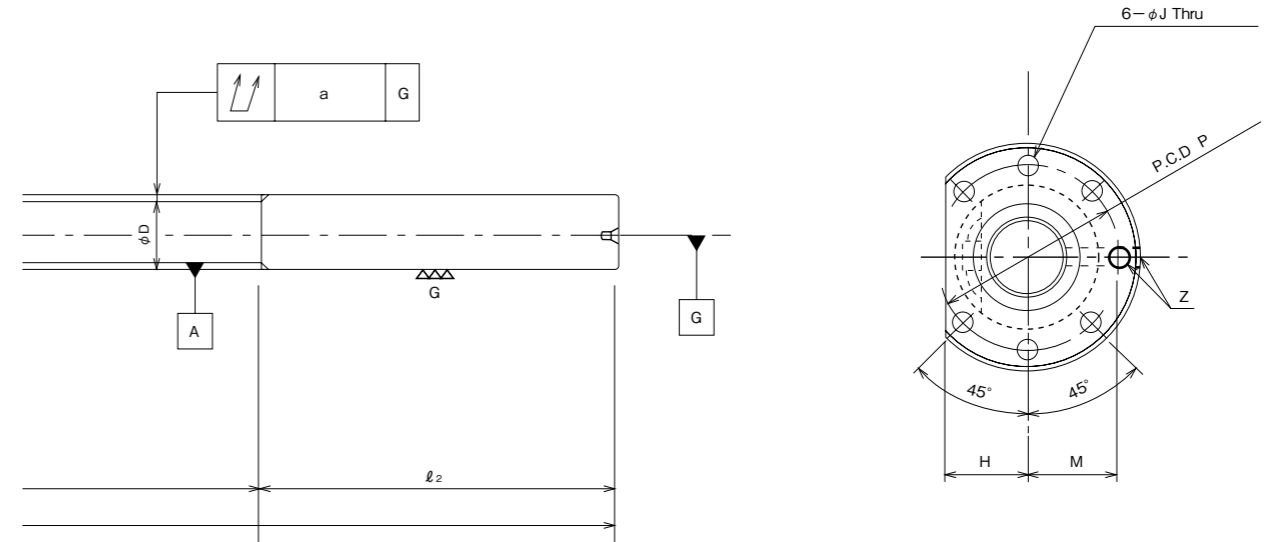
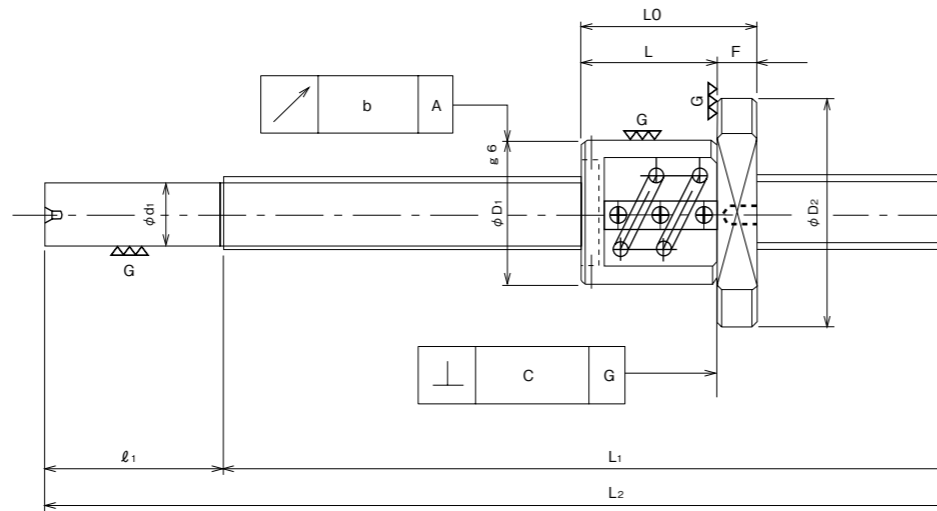


Standard Precision Ground Ball Screws FTBS Series



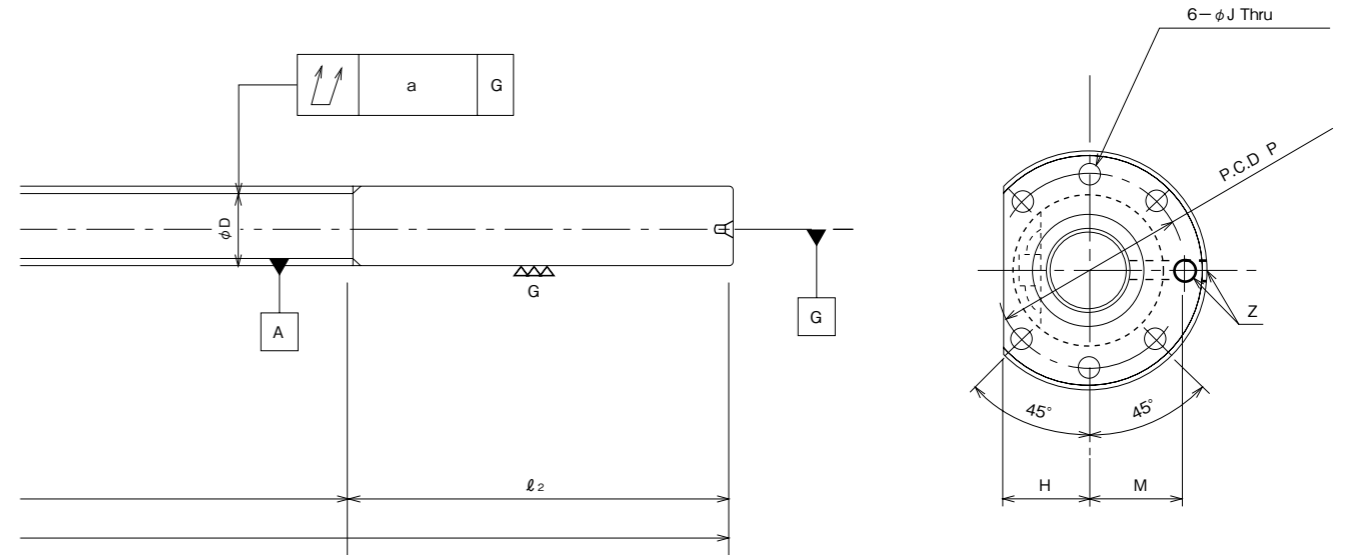
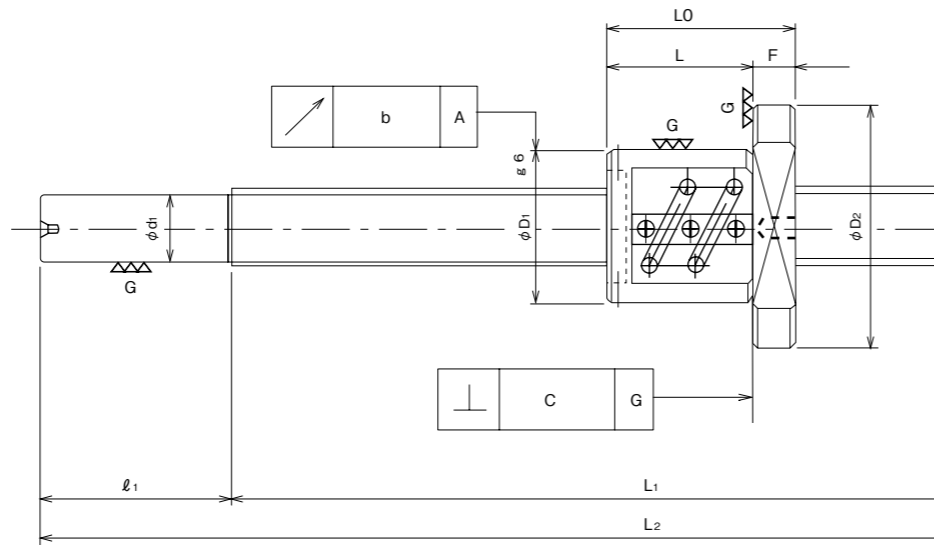
Unit : mm

Identification Number	Dimensions													
	Ball Screw Spec.				Shaft Dimensions					Lead Accuracy			Run-out Accuracy	
	Nominal Dia.	Lead	Ball Dia.	Circuits	Thread Length	Overall Length	Shaft Dia.	Shaft End Length		Accumulated Basic Lead Target	Allowable Accumulated Reference Lead Error	Allowable Lead Deviation	Run-out of Screw Shaft	Coaxiality of Nut O.D.
	D	l	d	m	L ₁	L ₂	d1	ℓ ₁	ℓ ₂	X	Y	Z	a	b
FTBS2004-400C5-5	20	4	2.381	2.5×2	250	400	—	—	150	-0.005	0.023	0.018	0.055	0.015
FTBS2004-600C5-5	20	4	2.381	2.5×2	400	600	18.1	50	150	-0.008	0.025	0.020	0.075	0.015
FTBS2004-1000C5-5	20	4	2.381	2.5×2	800	1000	18.1	50	150	-0.016	0.035	0.025	0.120	0.015
FTBS2005-400C5-5	20	5	3.175	2.5×2	250	400	—	—	150	-0.005	0.023	0.018	0.045	0.015
FTBS2005-600C5-5	20	5	3.175	2.5×2	400	600	17.4	50	150	-0.008	0.025	0.020	0.055	0.015
FTBS2005-1000C5-5	20	5	3.175	2.5×2	800	1000	17.4	50	150	-0.016	0.035	0.025	0.120	0.015
FTBS2504-500C5-5	25	4	2.381	2.5×2	300	500	—	—	200	-0.006	0.023	0.018	0.050	0.015
FTBS2504-800C5-5	25	4	2.381	2.5×2	500	800	23.1	100	200	-0.010	0.025	0.020	0.070	0.015
FTBS2504-1000C5-5	25	4	2.381	2.5×2	700	1000	23.1	100	200	-0.014	0.035	0.025	0.085	0.015
FTBS2504-1400C5-5	25	4	2.381	2.5×2	1000	1400	23.1	100	200	-0.022	0.046	0.030	0.130	0.015
FTBS2505-500C5-5	25	5	3.175	2.5×2	300	500	—	—	200	-0.006	0.023	0.018	0.050	0.015
FTBS2505-800C5-5	25	5	3.175	2.5×2	500	800	22.4	100	200	-0.010	0.025	0.020	0.070	0.015
FTBS2505-1000C5-5	25	5	3.175	2.5×2	700	1000	22.4	100	200	-0.014	0.035	0.025	0.085	0.015
FTBS2505-1400C5-5	25	5	3.175	2.5×2	1100	1400	22.4	100	200	-0.022	0.046	0.030	0.130	0.015
FTBS2510-600C5-3	25	10	4.763	1.5×2	400	600	—	—	200	-0.008	0.025	0.020	0.060	0.019
FTBS2510-1000C5-3	25	10	4.763	1.5×2	600	1000	21.4	100	300	-0.012	0.030	0.023	0.085	0.019
FTBS2510-1200C5-3	25	10	4.763	1.5×2	800	1200	21.4	100	300	-0.016	0.035	0.025	0.100	0.019
FTBS2510-1600C5-3	25	10	4.763	1.5×2	1200	1600	21.4	100	300	-0.024	0.046	0.030	0.130	0.019

Run-Out Accuracy	Nut Dimensions											Basic Load Rating (N)		Preload (N)	Identification Number
	Flange								Oil Hole		Dynamic Load	Static Load			
	Perpendicularity of Nut Flange	Nominal Dia.	Nut Length		Flange O.D.	P.C.D	Thickness	Notched Height	Bolt Hole Dia.	Position			Screw Dia.		
			L	L ₀							C	C ₀			
C	D ₁	L	L ₀	D ₂	P	F	H	J	M	Z	C	C ₀	P _{PL}		
0.011	40	38	49	63	51	11	23.0	5.5	22.5	M6	8570	21460	190	FTBS2004-400C5-5	
0.011	40	38	49	63	51	11	23.0	5.5	22.5	M6	8570	21460	190	FTBS2004-600C5-5	
0.011	40	38	49	63	51	11	23.0	5.5	22.5	M6	8570	21460	190	FTBS2004-1000C5-5	
0.011	44	45	56	67	55	11	24.5	5.5	24.5	M6	14890	34300	340	FTBS2005-400C5-5	
0.011	44	45	56	67	55	11	24.5	5.5	24.5	M6	14890	34300	340	FTBS2005-600C5-5	
0.011	44	45	56	67	55	11	24.5	5.5	24.5	M6	14890	34300	340	FTBS2005-1000C5-5	
0.011	46	37	48	69	57	11	25.0	5.5	25.5	M6	9550	27240	240	FTBS2504-500C5-5	
0.011	46	37	48	69	57	11	25.0	5.5	25.5	M6	9550	27240	240	FTBS2504-800C5-5	
0.011	46	37	48	69	57	11	25.0	5.5	25.5	M6	9550	27240	240	FTBS2504-1000C5-5	
0.011	46	37	48	69	57	11	25.0	5.5	25.5	M6	9550	27240	240	FTBS2504-1400C5-5	
0.011	50	44	55	73	61	11	26.5	5.5	27.5	M6	16560	43700	390	FTBS2505-500C5-5	
0.011	50	44	55	73	61	11	26.5	5.5	27.5	M6	16560	43700	390	FTBS2505-800C5-5	
0.011	50	44	55	73	61	11	26.5	5.5	27.5	M6	16560	43700	390	FTBS2505-1000C5-5	
0.011	50	44	55	73	61	11	26.5	5.5	27.5	M6	16560	43700	390	FTBS2505-1400C5-5	
0.013	58	66	81	85	71	15	31	6.6	33	M6	18420	38020	490	FTBS2510-600C5-3	
0.013	58	66	81	85	71	15	31	6.6	33	M6	18420	38020	490	FTBS2510-1000C5-3	
0.013	58	66	81	85	71	15	31	6.6	33	M6	18420	38020	490	FTBS2510-1200C5-3	
0.013	58	66	81	85	71	15	31	6.6	33	M6	18420	38020	490	FTBS2510-1600C5-3	

Note : 1, JIS precision standard is applied.
 2, L₁ : Induction hardened section
 3, Both ends (ℓ₁, ℓ₂) : Hrc 35 and below. These sections can be machined.

Standard Precision Ground Ball Screws FTBS Series



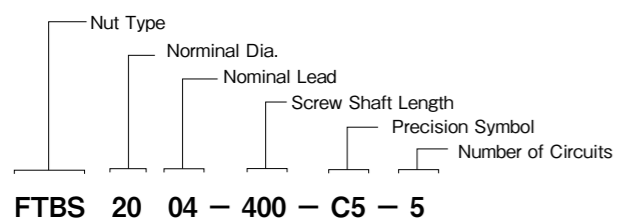
Unit : mm

Identification Number	Dimensions													
	Ball Screw Spec.				Shaft Dimensions					Lead Accuracy			Run-out Accuracy	
	Nominal Dia.	Lead	Ball Dia.	Circuits	Thread Length	Overall Length	Shaft Dia.	Shaft End Length		Accumulated Basic Lead Target	Allowable Accumulated Reference Lead Error	Allowable Lead Deviation	Run-out of Screw Shaft	Coaxiality of Nut O.D.
D	l	d	m	L ₁	L ₂	d1	ℓ ₁	ℓ ₂	X	Y	Z	a	b	
FTBS2806-600C5-5	28	6	3.175	2.5×2	400	600	—	—	200	-0.008	0.025	0.020	0.060	0.019
FTBS2806-1000C5-5	28	6	3.175	2.5×2	600	1000	25.4	100	300	-0.012	0.030	0.023	0.085	0.019
FTBS2806-1200C5-5	28	6	3.175	2.5×2	800	1200	25.4	100	300	-0.016	0.035	0.025	0.100	0.019
FTBS2806-1600C5-5	28	6	3.175	2.5×2	1200	1600	25.4	100	300	-0.024	0.046	0.030	0.130	0.019
FTBS3205-600C5-5	32	5	3.175	2.5×2	400	600	—	—	200	-0.008	0.025	0.020	0.050	0.019
FTBS3205-1000C5-5	32	5	3.175	2.5×2	600	1000	29.4	100	300	-0.012	0.030	0.023	0.065	0.019
FTBS3205-1200C5-5	32	5	3.175	2.5×2	800	1200	29.4	100	300	-0.016	0.035	0.025	0.075	0.019
FTBS3205-1600C5-5	32	5	3.175	2.5×2	1200	1600	29.4	100	300	-0.024	0.046	0.030	0.095	0.019
FTBS3206-600C5-5	32	6	3.969	2.5×2	400	600	—	—	200	-0.008	0.025	0.020	0.050	0.019
FTBS3206-1000C5-5	32	6	3.969	2.5×2	600	1000	28.4	100	300	-0.012	0.030	0.023	0.065	0.019
FTBS3206-1200C5-5	32	6	3.969	2.5×2	800	1200	28.4	100	300	-0.016	0.035	0.025	0.075	0.019
FTBS3206-1600C5-5	32	6	3.969	2.5×2	1200	1600	28.4	100	300	-0.024	0.046	0.030	0.095	0.019

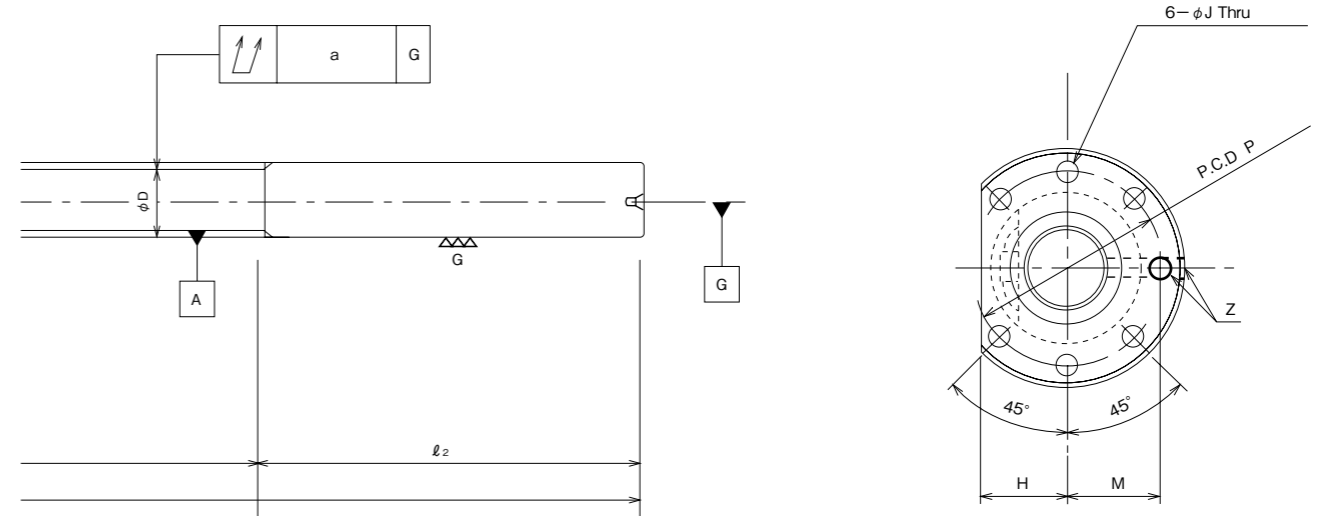
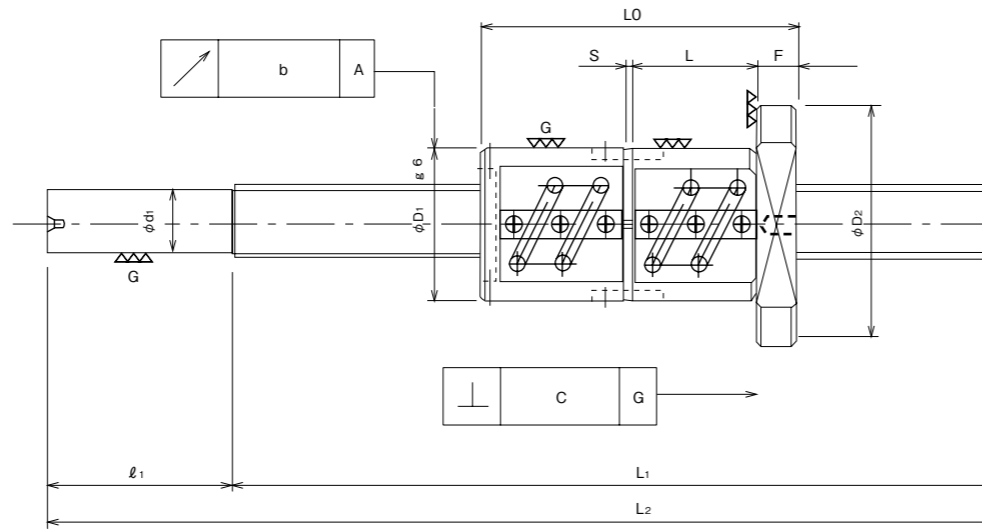
Run-Out Accuracy	Nut Dimensions										Basic Load Rating (N)		Preload (N)	Identification Number
	Flange							Oil Hole			Dynamic Load (C)	Static Load (C ₀)		
	Perpendicularity of Nut Flange	Nominal Dia.	Nut Length	Flange O.D.	P.C.D	Thickness	Notched Height	Bolt Hole Dia.	Position	Screw Dia.				
C	D ₁	L	L ₀	D ₂	P	F	H	J	M	Z	C	C ₀	P _{PL}	
0.013	55	51	63	85	69	12	30	6.6	33	M6	17440	48800	440	FTBS2806-500C5-5
0.013	55	51	63	85	69	12	30	6.6	33	M6	17440	48800	440	FTBS2806-1000C5-5
0.013	55	51	63	85	69	12	30	6.6	33	M6	17440	48800	440	FTBS2806-1200C5-5
0.013	55	51	63	85	69	12	30	6.6	33	M6	17440	48800	440	FTBS2806-1600C5-5
0.013	58	44	56	85	71	12	31	6.6	33	M6	18420	56050	490	FTBS3205-500C5-5
0.013	58	44	56	85	71	12	31	6.6	33	M6	18420	56050	490	FTBS3205-1000C5-5
0.013	58	44	56	85	71	12	31	6.6	33	M6	18420	56050	490	FTBS3205-1200C5-5
0.013	58	44	56	85	71	12	31	6.6	33	M6	18420	56050	490	FTBS3205-1600C5-5
0.013	62	51	63	89	75	12	33	6.6	35	M6	24690	69380	580	FTBS3206-500C5-5
0.013	62	51	63	89	75	12	33	6.6	35	M6	24690	69380	580	FTBS3206-1000C5-5
0.013	62	51	63	89	75	12	33	6.6	35	M6	24690	69380	580	FTBS3206-1200C5-5
0.013	62	51	63	89	75	12	33	6.6	35	M6	24690	69380	580	FTBS3206-1600C5-5

Note : 1, JIS precision standard is applied.
 2, L1 : Induction hardened section
 3, Both ends (ℓ₁, ℓ₂) : H=C 35 and below. These sections can be machined.

Code Name



Standard Precision Ground Ball Screws FTBSW Series



Unit : mm

Identification Number	Dimensions													
	Ball Screw Spec.				Shaft Dimensions					Lead Accuracy			Run-out Accuracy	
	Nominal Dia.	Lead	Ball Dia.	Circuits	Thread Length	Overall Length	Shaft Dia.	Shaft End Length	Accumulated Basic Lead Target	Allowable Accumulated Reference Lead Error	Allowable Lead Deviation	Run-out of Screw Shaft	Coaxiality of Nut O.D.	
D	l	d	m	L ₁	L ₂	d ₁	ℓ ₁	ℓ ₂	X	Y	Z	a	b	
FTBSW3210-1200C5-2.5	32	10	6.35	2.5×1	700	1200	27.2	120	380	-0.014	0.035	0.025	0.075	0.019
FTBSW3210-1500C5-2.5	32	10	6.35	2.5×1	1000	1500	27.2	120	380	-0.020	0.040	0.027	0.095	0.019
FTBSW3210-1800C5-2.5	32	10	6.35	2.5×1	1300	1800	27.2	120	380	-0.026	0.054	0.035	0.120	0.019
FTBSW3210-2100C5-2.5	32	10	6.35	2.5×1	1600	2100	27.2	120	380	-0.032	0.054	0.035	0.150	0.019
FTBSW3610-1200C5-5	36	10	6.35	2.5×2	700	1200	31.2	120	380	-0.014	0.035	0.025	0.075	0.019
FTBSW3610-1500C5-5	36	10	6.35	2.5×2	1000	1500	31.2	120	380	-0.020	0.040	0.027	0.095	0.019
FTBSW3610-1800C5-5	36	10	6.35	2.5×2	1300	1800	31.2	120	380	-0.026	0.054	0.035	0.120	0.019
FTBSW3610-2100C5-5	36	10	6.35	2.5×2	1600	2100	31.2	120	380	-0.032	0.054	0.035	0.150	0.019
FTBSW4010-1300C5-5	40	10	6.35	2.5×2	700	1300	35.2	150	450	-0.014	0.035	0.025	0.095	0.025
FTBSW4010-1600C5-5	40	10	6.35	2.5×2	1000	1600	35.2	150	450	-0.020	0.040	0.027	0.095	0.025
FTBSW4010-2000C5-5	40	10	6.35	2.5×2	1400	2000	35.2	150	450	-0.028	0.054	0.035	0.120	0.025
FTBSW4010-2400C5-5	40	10	6.35	2.5×2	1800	2400	35.2	150	450	-0.036	0.065	0.040	0.150	0.025
FTBSW4012-1300C5-5	40	12	7.144	2.5×2	700	1300	34.4	150	450	-0.014	0.035	0.025	0.095	0.025
FTBSW4012-1600C5-5	40	12	7.144	2.5×2	1000	1600	34.4	150	450	-0.020	0.040	0.027	0.095	0.025
FTBSW4012-2000C5-5	40	12	7.144	2.5×2	1400	2000	34.4	150	450	-0.028	0.054	0.035	0.120	0.025
FTBSW4012-2400C5-5	40	12	7.144	2.5×2	1800	2400	34.4	150	450	-0.036	0.065	0.040	0.150	0.025
FTBSW5010-1700C5-5	50	10	6.35	2.5×2	1000	1700	45.2	200	500	-0.020	0.040	0.027	0.085	0.025
FTBSW5010-2200C5-5	50	10	6.35	2.5×2	1500	2200	45.2	200	500	-0.030	0.054	0.035	0.110	0.025
FTBSW5010-2700C5-5	50	10	6.35	2.5×2	2000	2700	45.2	200	500	-0.040	0.065	0.040	0.140	0.025
FTBSW5010-3200C5-5	50	10	6.35	2.5×2	2500	3200	45.2	200	500	-0.050	0.077	0.046	0.180	0.025

Run-Out Accuracy	Nut Dimensions											Basic Load Rating (N)		Preload (N)	Identification Number
	Perpendicularity of Nut Flange	Flange								Oil Hole		Dynamic Load	Static Load		
		Nominal Dia.	Nut Length	Shim Thickness	Flange O.D.	P.C.D	Thickness	Notched Height	Bolt Hole Dia.	Position	Screw Dia.				
C	D ₁	L	L ₀	S	D ₂	P	F	H	J	M	Z	C	C ₀	P _{PL}	
0.013	74	48	130	6	108	90	15	39	9	44	M6	25480	53990	1470	FTBSW3210-1200C5-2.5
0.013	74	48	130	6	108	90	15	39	9	44	M6	25480	53990	1470	FTBSW3210-1500C5-2.5
0.013	74	48	130	6	108	90	15	39	9	44	M6	25480	53990	1470	FTBSW3210-1800C5-2.5
0.013	74	48	130	6	108	90	15	39	9	44	M6	25480	53990	1470	FTBSW3210-2100C5-2.5
0.013	75	78	193	6	120	98	18	44	11	44	PT1/8	49290	122500	2450	FTBSW3610-1200C5-5
0.013	75	78	193	6	120	98	18	44	11	44	PT1/8	49290	122500	2450	FTBSW3610-1500C5-5
0.013	75	78	193	6	120	98	18	44	11	44	PT1/8	49290	122500	2450	FTBSW3610-1800C5-5
0.013	75	78	193	6	120	98	18	44	11	44	PT1/8	49290	122500	2450	FTBSW3610-2100C5-5
0.015	82	78	193	6	124	102	18	45	11	46	PT1/8	51940	137200	2450	FTBSW4010-1300C5-5
0.015	82	78	193	6	124	102	18	45	11	46	PT1/8	51940	137200	2450	FTBSW4010-1600C5-5
0.015	82	78	193	6	124	102	18	45	11	46	PT1/8	51940	137200	2450	FTBSW4010-2000C5-5
0.015	82	78	193	6	427	102	18	45	11	46	PT1/8	51940	137200	2450	FTBSW4010-2400C5-5
0.015	86	90	225	12	128	106	18	47	11	49	PT1/8	60950	154840	3430	FTBSW4012-1300C5-5
0.015	86	90	225	12	128	106	18	47	11	49	PT1/8	60950	154840	3430	FTBSW4012-1600C5-5
0.015	86	90	225	12	128	106	18	47	11	49	PT1/8	60950	154840	3430	FTBSW4012-2000C5-5
0.015	86	90	225	12	128	106	18	47	11	49	PT1/8	60950	154840	3430	FTBSW4012-2400C5-5
0.015	93	78	193	6	135	113	18	49	11	52	PT1/8	57720	174440	2940	FTBSW5010-1700C5-5
0.015	93	78	193	6	135	113	18	49	11	52	PT1/8	57720	174440	2940	FTBSW5010-2200C5-5
0.015	93	78	193	6	135	113	18	49	11	52	PT1/8	57720	174440	2940	FTBSW5010-2700C5-5
0.015	93	78	193	6	135	113	18	49	11	52	PT1/8	57720	174440	2940	FTBSW5010-3200C5-5

Note : 1, JIS precision standard is applied.
 2, L1 : Induction hardened section
 3, Both ends (ℓ₁, ℓ₂) : HRC 35 and below. These sections can be machined.