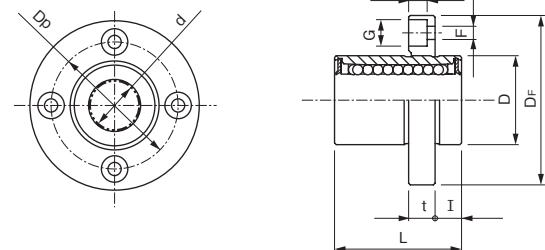
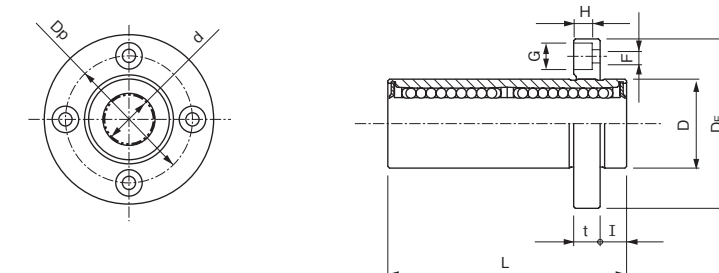


Round Flange (Spigot-joint) Type FTBI Series



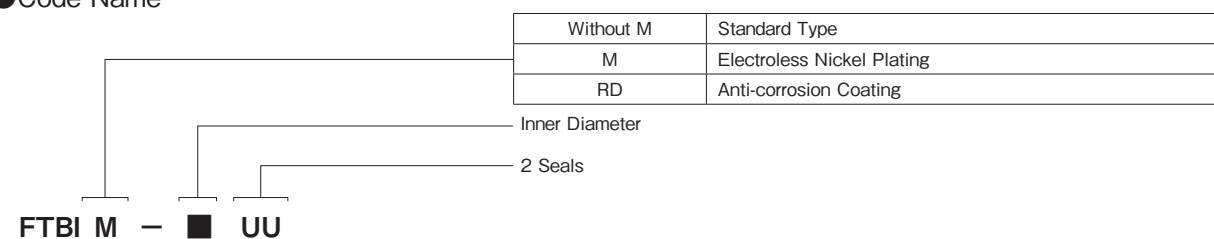
Shaft Diameter (mm)	Code Name	Major Dimensions (mm)										Perpendicularity ( $\mu\text{m}$ )	Eccentricity (MAX) ( $\mu\text{m}$ )	Basic Load Rating	
		d	D	L	D <sub>F</sub>	t	D <sub>P</sub>	F	G	H	I			C (N)	C <sub>0</sub> (N)
6	FTBI-6UU	6	12	19	28	5	20	3.5	6	3.1	5	12	12	205	264
8	FTBI-8UU	8	15	24	32	5	24	3.5	6	3.1	5			264	401
10	FTBI-10UU	10	19	29	40	6	29	4.5	7.5	4.1	6			372	548
12	FTBI-12UU	12	21	30	42	6	32	4.5	7.5	4.1	6			411	597
13	FTBI-13UU	13	23	32	43	6	33	4.5	7.5	4.1	6			509	774
16	FTBI-16UU	16	28	37	48	6	38	4.5	7.5	4.1	6			774	1,176
20	FTBI-20UU	20	32	42	54	8	43	5.5	9	5.1	8	15	15	862	1,372
25	FTBI-25UU	25	40	59	62	8	51	5.5	9	5.1	8			980	1,568
30	FTBI-30UU	30	45	64	74	10	60	6.6	11	6.1	10			1,568	2,744

Round Flange (Spigot-joint) Double Type FTBIW Series



Shaft Diameter (mm)	Code Name	Major Dimensions (mm)										Perpendicularity ( $\mu\text{m}$ )	Eccentricity (MAX) ( $\mu\text{m}$ )	Basic Load Rating	
		d	D	L	D <sub>F</sub>	t	D <sub>P</sub>	F	G	H	I			C (N)	C <sub>0</sub> (N)
6	FTBIW-6UU	6	12	35	28	5	20	3.5	6	3.1	5	15	15	323	529
8	FTBIW-8UU	8	15	45	32	5	24	3.5	6	3.1	5			431	784
10	FTBIW-10UU	10	19	55	40	6	29	4.5	7.5	4.1	6			588	1,097
12	FTBIW-12UU	12	21	57	42	6	32	4.5	7.5	4.1	6			656	1,195
13	FTBIW-13UU	13	23	61	43	6	33	4.5	7.5	4.1	6			813	1,568
16	FTBIW-16UU	16	28	70	48	6	38	4.5	7.5	4.1	6			1,225	2,352
20	FTBIW-20UU	20	32	80	54	8	43	5.5	9	5.1	8	20	20	1,401	2,744
25	FTBIW-25UU	25	40	112	62	8	51	5.5	9	5.1	8			1,558	3,136
30	FTBIW-30UU	30	45	123	74	10	60	6.6	11	6.1	10			2,489	5,488

Code Name



Code Name

