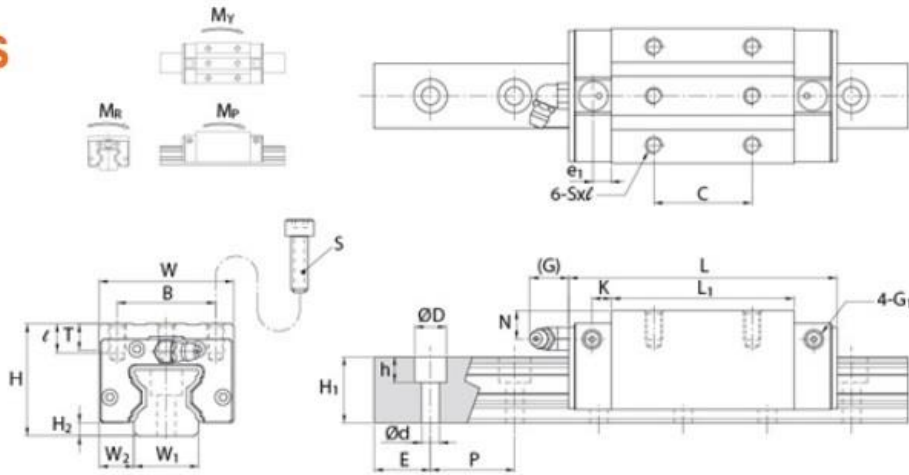


MSR S/LS



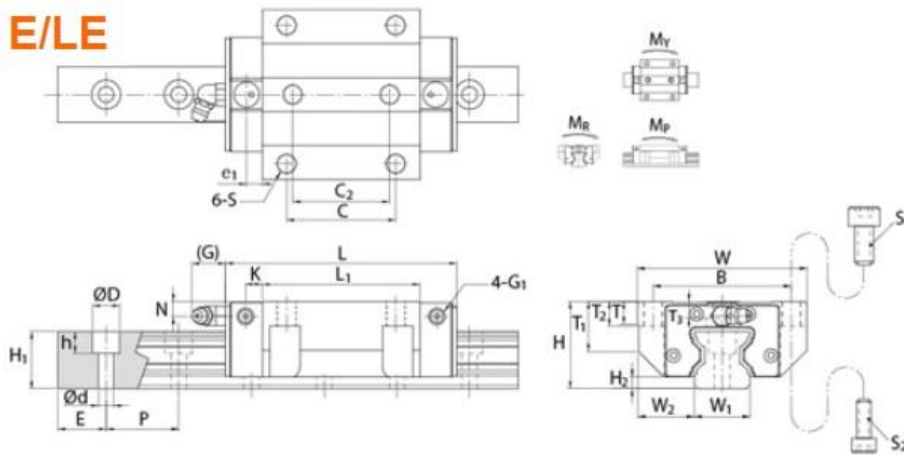
Note*: Single: Single carriage/ Double: Double carriages closely contacting with each other.

Unit:mm

Model No.	External dimension						Carriage dimension										
	Height H	Width W	Length L	W ₂	H ₂	B	C	S	ℓ	L ₁	T	N	G	K	e ₁	G ₁	Grease Nipple
MSR 20S	30	44	89.8	12	4.6	32	36	M5	7	57.8	8	5	5.15	4	6.5	M4	G-M4
MSR 25S MSR 25LS	40	48	97.5 115.5	12.5	4.8	35	35 50	M6	9	65.5 83.5	9.5	10	12	6.6	6.5	M6	G-M6
MSR 30S MSR 30LS	45	60	112.4 135.2	16	6	40	40 60	M8	12	75.9 98.7	10	10	12	8	7	M6	G-M6
MSR 35S MSR 35LS	55	70	125.3 153.5	18	6.5	50	50 72	M8	14	82.3 110.5	12	15	12	8	7	M6	G-M6
MSR 45S MSR 45LS	70	86	154.2 189.4	20.5	8	60	60 80	M10	19	106.5 141.7	17	20	13.5	10	8	M6	G-PT1/8
MSR 55S MSR 55LS	80	100	185.4 235.4	23.5	10	75	75 95	M12	19	129.5 179.5	18	21	13.5	12	7.95	M6	G-PT1/8
MSR 65LS	90	126	300.4	31.5	12	76	120	M16	20	230	19.5	16.5	13.5	12	8	M6	G-PT1/8

Model No.	Rail dimension					Basic load rating		Static moment rating				Weight		
	Width W ₁	Height H ₁	Pitch P	E std.	D × h × d	Dynamic C kN	Static Co kN	M _p kN-m		M _y kN-m		M _R kN-m	Carriage kg	Rail kg/m
								Single*	Double*	Single*	Double*			
MSR 20S	20	20	30	20	9.5 × 8.5 × 6	22.8	60.8	0.51	2.85	0.51	2.85	0.62	0.34	2.6
MSR 25S MSR 25LS	23	23.5	30	20	11 × 9 × 7	29.6 36.3	63.8 82.9	0.65 1.08	3.82 5.94	0.65 1.08	3.82 5.94	0.73 0.95	0.65 0.85	3.5
MSR 30S MSR 30LS	28	27.5	40	20	14 × 12 × 9	42.8 54.0	91.9 124.0	1.09 1.96	6.38 10.60	1.09 1.96	6.38 10.60	1.27 1.72	1 1.22	5
MSR 35S MSR 35LS	34	30.5	40	20	14 × 12 × 9	57.9 73.9	123.5 169.0	1.59 2.94	9.56 16.18	1.59 2.94	9.56 16.18	2.09 2.85	1.65 2.15	7
MSR 45S MSR 45LS	45	37	52.5	22.5	20 × 17 × 14	92.8 117.2	193.8 261.6	3.28 5.90	18.76 31.32	3.28 5.90	18.76 31.32	4.40 5.94	3.2 4.1	11.2
MSR 55S MSR 55LS	53	43	60	30	23 × 20 × 16	132.8 172.8	270.0 378.0	5.49 10.60	31.18 55.58	5.49 10.60	31.18 55.58	7.33 10.26	5.1 7	15.6
MSR 65LS	63	52	75	35	26 × 22 × 18	277.0	624.0	22.50	117.87	22.50	117.87	20.02	13.3	22.4

MSR E/LE



Model No.	Bolt Size	
	S ₁	S ₂
MSR 20	M6	-
MSR 25	M8	M6
MSR 30	M10	M8
MSR 35	M10	M8
MSR 45	M12	M10
MSR 55	M14	M12
MSR 65	M16	M14

Note*: Single: Single carriage/ Double: Double carriages closely contacting with each other.

Unit:mm

Model No.	External dimension				Carriage dimension															
	Height H	Width W	Length L	W ₂	H ₂	B	C	C ₂	S	L ₁	T	T ₁	T ₂	T ₃	N	G	K	e ₁	G ₁	Grease Nipple
MSR 20E	30	63	89.8	21.5	4.6	53	40	35	M6	57.8	10	25.4	10	7.95	5	5.15	4	6.5	M4	G-M4
MSR 25E MSR 25LE	36	70	97.5 115.5	23.5	4.8	57	45	40	M8	65.5 83.5	9.5	20.2	10	5.8	6	12	6.6	6.5	M6	G-M6
MSR 30E MSR 30LE	42	90	112.4 135.2	31	6	72	52	44	M10	75.9 98.7	10	21.6	13	6.7	7	12	8	7	M6	G-M6
MSR 35E MSR 35LE	48	100	125.3 153.5	33	6.5	82	62	52	M10	82.3 110.5	12	27.5	15	9.5	8	12	8	7	M6	G-M6
MSR 45E MSR 45LE	60	120	154.2 189.4	37.5	8	100	80	60	M12	106.5 141.7	14.5	35.5	15	12.5	10	13.5	10	8	M6	G-PT 1/8
MSR 55E MSR 55LE	70	140	185.4 235.4	43.5	10	116	95	70	M14	129.5 179.5	17.5	41	18	15.5	11	13.5	12	7.95	M6	G-PT 1/8
MSR 65LE	90	170	300.4	53.5	12	142	110	82	M16	230	19.5	56	20	26	16.5	13.5	12	8	M6	G-PT 1/8

Model No.	Rail dimension					Basic load rating		Static moment rating				Weight		
	Width W ₁	Height H ₁	Pitch P	E std.	D × h × d	Dynamic C kN	Static Co kN	M _p kN-m		M _y kN-m		M _R kN-m	Carriage kg	Rail kg/m
								Single*	Double*	Single*	Double*			
MSR 20E	20	20	30	20	9.5 × 8.5 × 6	22.8	60.8	0.51	2.85	0.51	2.85	0.62	0.54	2.6
MSR 25E MSR 25LE	23	23.5	30	20	11 × 9 × 7	29.6 36.3	63.8 82.9	0.65 1.08	3.82 5.94	0.65 1.08	3.82 5.94	0.73 0.95	0.75 0.95	3.5
MSR 30E MSR 30LE	28	27.5	40	20	14 × 12 × 9	42.8 54.0	91.9 124.0	1.09 1.96	6.38 10.60	1.09 1.96	6.38 10.60	1.27 1.75	1.4 1.72	5
MSR 35E MSR 35LE	34	30.5	40	20	14 × 12 × 9	57.9 73.9	123.5 169.0	1.59 2.94	9.56 16.18	1.59 2.94	9.56 16.18	2.09 2.85	1.95 2.45	7
MSR 45E MSR 45LE	45	37	52.5	22.5	20 × 17 × 14	92.8 117.2	193.8 261.6	3.28 5.90	18.76 31.32	3.28 5.90	18.76 31.32	4.40 5.94	3.9 4.5	11.2
MSR 55E MSR 55LE	53	43	60	30	23 × 20 × 16	132.8 172.5	270.0 378.0	5.49 10.60	31.18 55.58	5.49 10.60	31.18 55.58	7.33 10.28	6 7.9	15.6
MSR 65LE	63	52	75	35	26 × 22 × 18	277.0	624.0	22.50	117.87	22.50	117.87	20.02	17.6	22.4